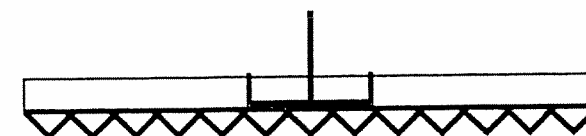
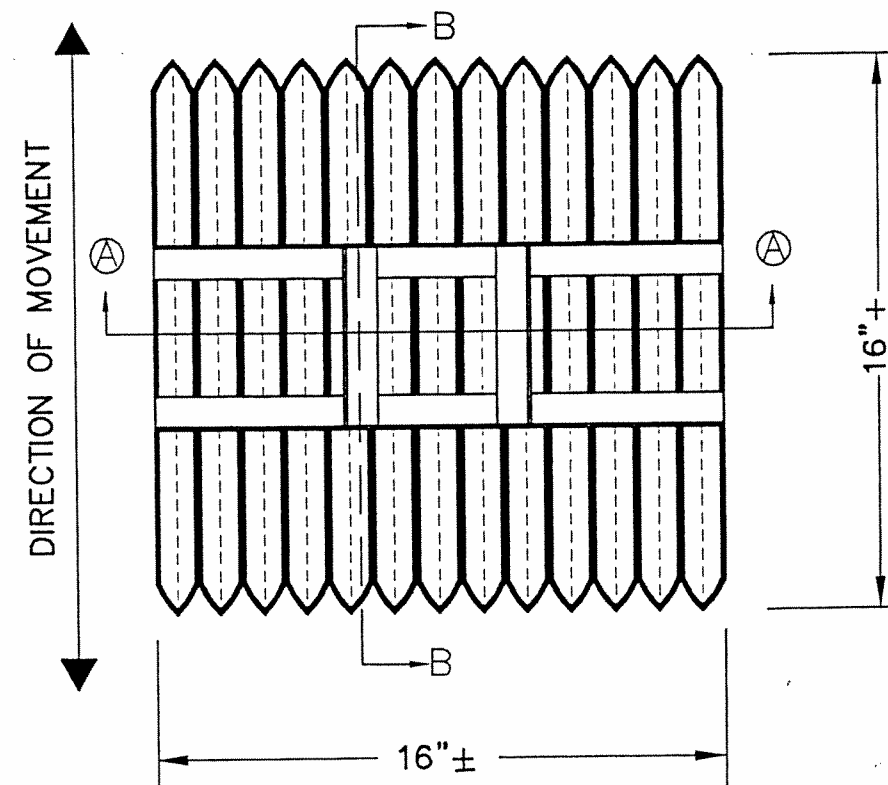


TYPICAL "V" GROOVE

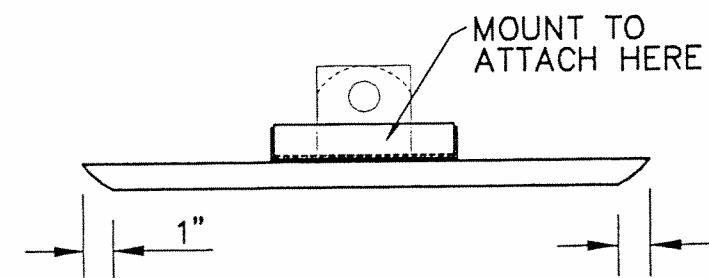
NOTES:

CONCRETE RAMPS SHALL BE BULL FLOATED TO A SMOOTH & UNIFORM SURFACE BEFORE GROOVING TOOL IS USED. GROOVES SHALL BE AT A 60 DEGREE ANGLE TO THE RAMP EDGE. THE GROOVING TOOL MUST BE WORKED UNTIL FULL GROOVES ARE ESTABLISHED INTO THE CONCRETE. THE GROOVING TOOL SHALL BE PUSHED OR PULLED ACROSS THE SURFACE OF THE CONCRETE IN A REASONABLY STRAIGHT LINE IN ONE CONTINUOUS PASS FROM THE CENTERLINE AT THE SPECIFIED ANGLE. THE TOOL SHALL PENETRATE THE SURFACE OF THE CONCRETE 1/2" TO 3/4". CAUTION SHALL BE TAKEN TO PERFORM THE V-GROOVE FINISH AT THE PROPER TIME SO THAT THE GROOVES SHALL BE RELATIVELY SMOOTH AND UNIFORM AND WITHOUT UNNECESSARILY TEARING THE SURFACE OF THE CONCRETE. THE FINISHED SURFACE SHALL BE PROTECTED FROM RAINFALL AND RUNOFF UNTIL CURED.

V-GROOVE RAMP FINISH



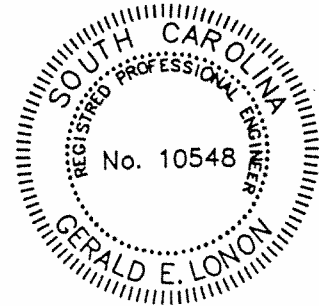
SECTION A-A



SECTION B-B

TYPICAL V-GROOVE FINISHING TOOL

NOTE: USE 1" x 1" x 3/16" ALUM. ANGLE



PACE  
ENGINEERING CONSULTANTS, INC.  
1813 HAMPTON STREET, P.O. BOX 7561,  
COLUMBIA, S.C. 29202



V-GROOVE RAMP FINISH

SOUTH CAROLINA DEPARTMENT  
OF NATURAL RESOURCES  
ENGINEERING SECTION

SHEET  
R-4

5